



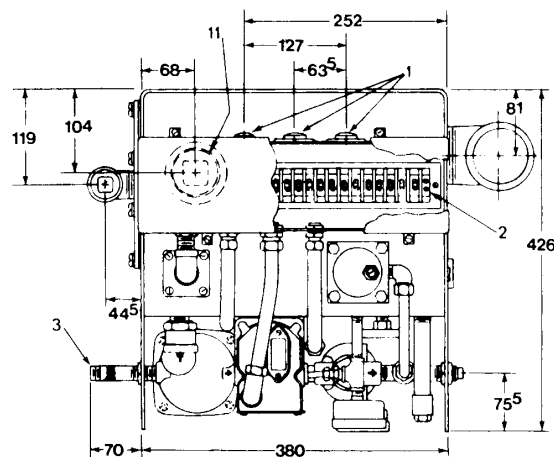
AUTOMATIC MIST LUBRICATION

HIGH FLOWRATE GENERATOR 350 – 600 – 1200 CLM WITHOUT THERMO-AIR

These are complete units and require only power and air supply to operate.

| SELECTION TABLE FOR GENERATORS WITHOUT THERMO-AIR | | | | |
|---|-----------|-----------|---------------------|-------------------------|
| *GENERATOR | CLM | | VOLT AC | |
| | FLOW RATE | MIN - MAX | OIL HEATER 50/60 Hz | SOLENOID VALVE 60/50 Hz |
| 2032022 | 350 | 145- | | 115V |
| 2032006 | | 590 | | 230V |
| 2032028 | 600 | 210- | | 115V |
| 2032040 | | 920 | | 230V |
| 2032041 | 1200 | 420- | | 115V |
| 2032042 | | 1260 | | 230V |

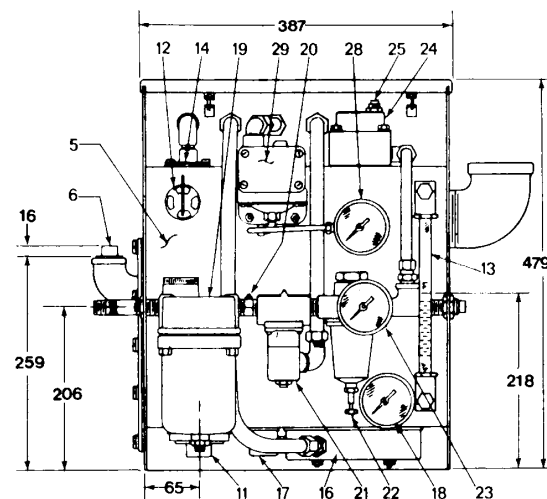
Weight: 56 Kg empty – 71.5 full.
* Front panel part n° 2033301 not included. Order separately.



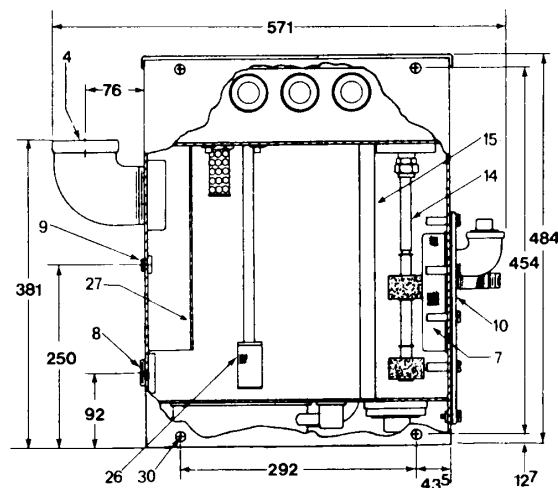
- 1- Holes for power supply cables. (3) Ø22.2 mm. 2 rubber caps.
- 2- Oil seal box with cover for electric wiring. All the internal terminals are numbered.
- 3- Air inlet ½ NPTF (m..)
- 4- Mist outlet 2- ½ NPTF (f.).
- 5- Welded steel reservoir.

RESERVOIR CAPACITY (approximately)

| | Lt | cm³ |
|--|----|-------|
| A - From EMPTY to FULL indicator | 19 | 19000 |
| B - From the full indicator to the oil intake inlet | 18 | 18000 |
| C - Oil reserve between the intake inlet and the minimum level contact | 6 | 6000 |
| D - Oil capacity at maximum level contact close | 19 | 19000 |



- 6- Reservoir refill cap 1 NPTF (f.)
- 7- Stainless steel filter, fixed internally the cover by 4 hexagonal nuts. To remove the cover and filter it is necessary a lateral space of 20 cm.
- 8- Screw-cap to refill the supply reservoir 1 NPTF (f.).
- 9- Screw-cap for line discharge 3/8 NPTF (f.)



Web site:
<http://www.dropsa.com>

E-mail:
sales@dropsa.com

C2034IE
WK 51/04



AUTOMATIC MIST LUBRICATION

- 10- Cover fixed by cylindrical-head screws. Hosing width for internal reservoir 15x20 cm.
- 11- Reservoir discharge piping – 2NPTF (f.)
- 12- Safety valve. It opens at 0.7 Kg/cm² to avoid excessive pressure in the reservoir when delivery pressure is not normal.
- 13- Oil level piping – oil column of 9.5 mm corresponds to 0.976 lt.
- 14- Reservoir oil level indicator. (2) Mono-phase magnetic contacts. Maximum level contact closes when oil level reaches 16 lt; minim level closes when oil level reaches 5 lt.

LEVEL CONTACT SPECIFICATIONS

| | | AC 60/50 Hz | |
|----------------|--|-------------|------|
| Voltage | | 115V | 230V |
| Amp. | | 3.0 | 1.5 |

- 15- Shield for level contact protection.
- 16- Heater – 300 W, mounted on the surface.
- 17- Heater Thermostat. Un-regulatable contact, normally close, set to open at a temperature of 38°C.

HEATER THERMOSTAT ELECTRIC SPECIFICATIONS

| | | AC 50/60 Hz | | DC |
|----------------|--|-------------|------|-----|
| Voltage | | 115V | 230V | 28V |
| Amp. | | 4 | 2 | 4 |

- 18- Oil Thermostat. Scale: 0÷115°C.
- 19- Water trap. Maximum pressure 14 kg/cm². It separates water from air up to 95-99%. Automatic discharge ¼ NPTF (f.).
- 20- Plug 1/8" NPTF (f.).
- 21- Air solenoid valve. Operating pressure 0.35÷ 10.5 Kg/cm². Diameter 12,7.
- 22- Air pressure regulator. Maximum pressure 17.5 Kg/cm². Regulation range: 0÷ 10.5 kg/cm²
- 23- Pressure gauge 0÷7 Kg/cm². It indicates pressure at the mist generator nozzle.
- 24- Generator and mist nozzle assembly. 350, 600, 1200 assemblies are interchangeable.
- 25- Oil flow regulating screw with lock-nut. 1200 CLM generator is provided with two regulation screws. Maximum flow is achieved with 2 ½ turns anticlockwise. Minimum regulation possible is ½ turn anticlockwise.
- 26- Generator nozzle with stainless steel intake filter. For maintenance it is necessary to remove the assembly from the reservoir.
- 27- Deflector.
- 28- Pressure gauge to indicate delivery pressure. Scale: 0÷2500 of H2O.
- 29- Pressure-switch to control minimum and maximum mist pressure. It is arranged with two contacts which can be regulated from 20 to 2200 mm of H2O. generally, the contacts are regulated at 200 and 1400 mm of H2O. Contact pressure is decreased by turning clockwise the regulation screw. Maximum piezometric pressure: 0.7 kg/ cm²

PRESSURE-SWITCH ELECTRIC CHARACTERISTICS

| | | AC 50/60hz | | | | | | DC | |
|--------------------|----------------|------------|------|------|------|------|------|----------|------|
| | | 115V | | 230V | | 440 | | 6 – 24 v | |
| Static Amp. | | 10 | | 10 | | 3 | | 0.5 | |
| In | Amp. | N.C. | N.O. | N.C. | N.O. | N.C. | N.O. | N.C. | N.O. |
| | Closing | 30 | 15 | 30 | 15 | 15 | 7.5 | 0.5 | 0.5 |

- 30- Fixing holes. 849 Ø 13.5 mm.



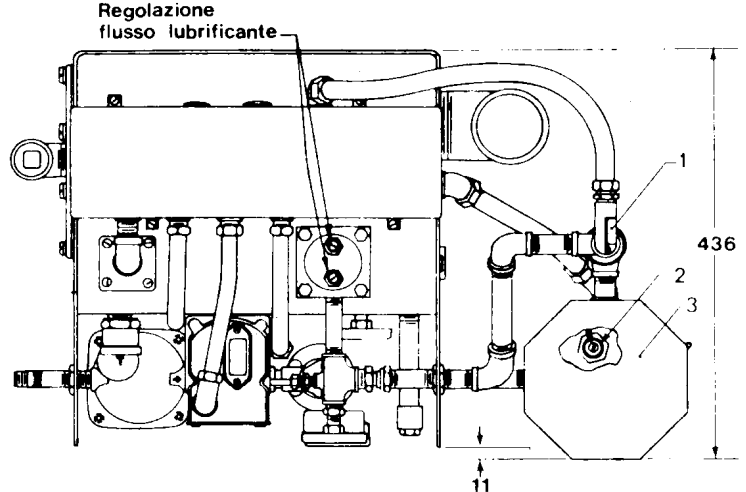
AUTOMATIC MIST LUBRICATION

HIGH FLOWRATE GENERATOR 350 – 600 – 1200 CLM WITH THERMO-AIR

These three high flowrate generators are provided with external thermo-air heater and temperature control. When the generator is regulated at the maximum, thermo-air flow can increase up to 120°C. When the generator is regulated at 1120 CLM with an environmental temperature of 21°C, thermo-air will increase air temperature at 93°C.

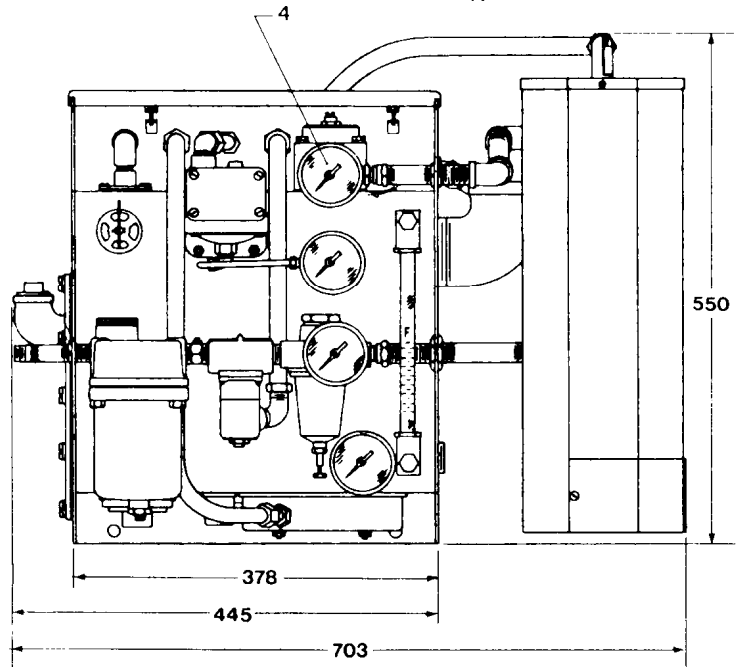
- 1- Thermostat for controlling the minimum air temperature. A normally close contact is regulated to open at a temperature of 65°C. Regulation range: 38°C÷148°C. Each turn of the screw corresponds to 27°C; in clockwise direction temperature increases; it decreases anti-clockwise.

| MINIMUM REGULATION AIR TEMPERATURE THERMOSTAT ELECTRIC SPECIFICATIONS | | | |
|--|------------|------------|-----------|
| Voltage | AC 50/60Hz | | DC |
| | Amp. | 115V 10 | 230V 5 |



- 2- Thermostat for controlling the maximum air temperature. A normally close contact opens at a temperature of 93°C. Regulation range: 38°C÷205°C. To access the regulation screw, remove the heater cover. Each turn of the screw corresponds to 27°C: clockwise direction temperature increases; anti-clockwise decreases.

| CONTROL AIR THERMOSTAT SPECIFICATIONS | | |
|---------------------------------------|------------|------------|
| Voltage | AC 50/60Hz | DC |
| | Amp. | 115V 25 |



- 3- Thermo-air heater with 2000W element per 230V. Maximum temperature is reached after 5 minutes.
- 4- Thermometer to control air temperature, located at the thermo-air outlet. Scale 10°÷260. Tolerance: ± 2.5 °C.

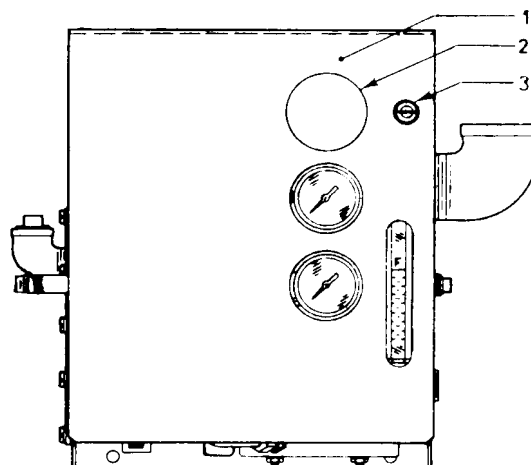
| SELECTION TABLE FOR GENERATORS WITH THERMO-AIR | | | | | |
|---|----------|-----------|------------------------|----------------------------|-----------------------|
| *GENERATOR | CLM | | VOLT AC | | AIR HEATER 50/60Hz |
| | FLOWRATE | MIN - MAX | OIL HEATER 50/60 Hz | SOLENOID VALVE 60/50 Hz | |
| 2032023 | 350 | 140-530 | 115V | | 230V |
| 2032007 | | | 230V | | |
| 2032009 | 600 | 170-820 | 115V | | |
| 2032031 | | | 230V | | |
| 2032041 | 1200 | 340-1120 | 115V | | |
| 2032029 | | | 230V | | |
| Weight: 74 Kg empty – 89.9 full. | | | | | |
| * Front panel part n° 2033301 not included. Order separately. | | | | | |

AUTOMATIC MIST LUBRICATION

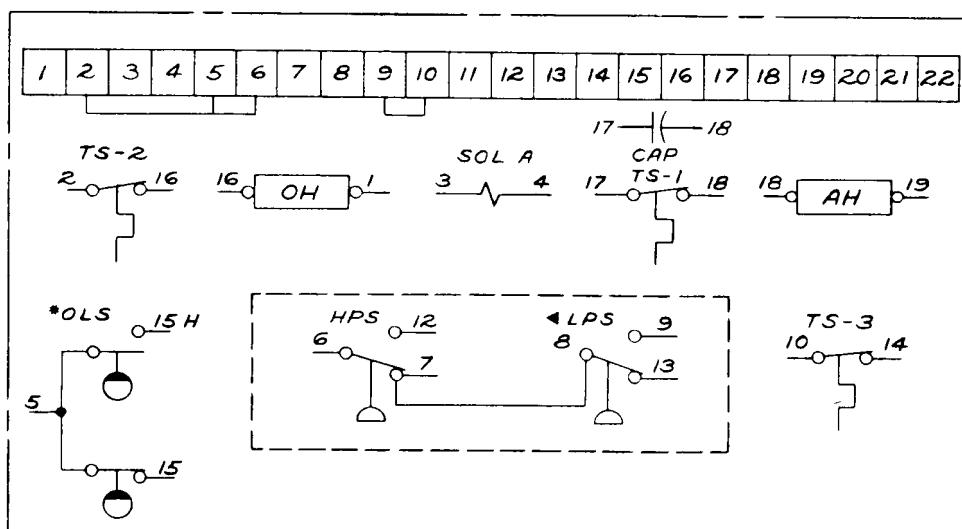
ACCESSORIES

Front plate, hinge part n° 2033301. Weight kg. 6. It prevents the generator from tampering. It can be fixed to the generator (with or without thermo-air) by 4 screws.

- 1- Front plate.
- 2- Air thermometer housing. Remove it when the front plate is used with thermo-air generators.
- 3- Keyhole and key. Only one key for all the keyholes.



350 – 600 – 1200 GENERATORS ELECTRIC DIAGRAM



- ◀ Terminal 8 is not connected to the terminal strip.
- * terminal 15H goes to the terminal strip, but is not connected.

COMPONENTS TABLE

| Abbreviation | Components |
|--------------|--|
| SOL A | Air solenoid |
| AH | Air heater |
| OH | Oil heater |
| HPS | Delivery mist high pressure control contact |
| LPS | Delivery mist low pressure control contact |
| TS - 1 | Air heater thermostat |
| TS - 2 | Oil heater thermostat |
| TS - 3 | Minimum air temperature control contact |
| CAP | Condenser |
| OLS | Oil level indicator |
| | Maximum level contact 5 – 15H |
| | Minimum level contact 5 – 15 |
| | (The contact can open when oil level is low) |

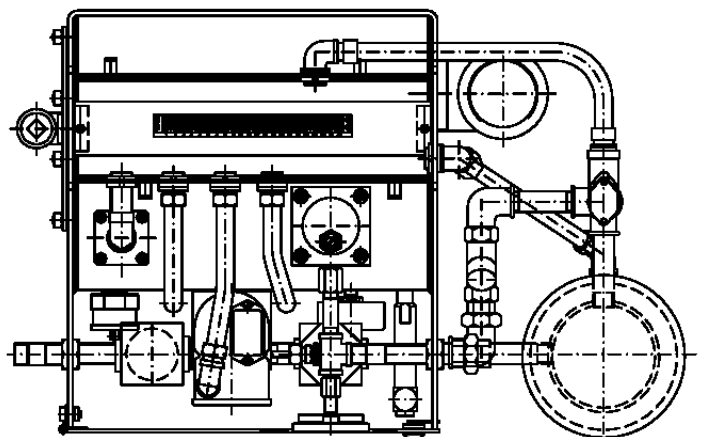
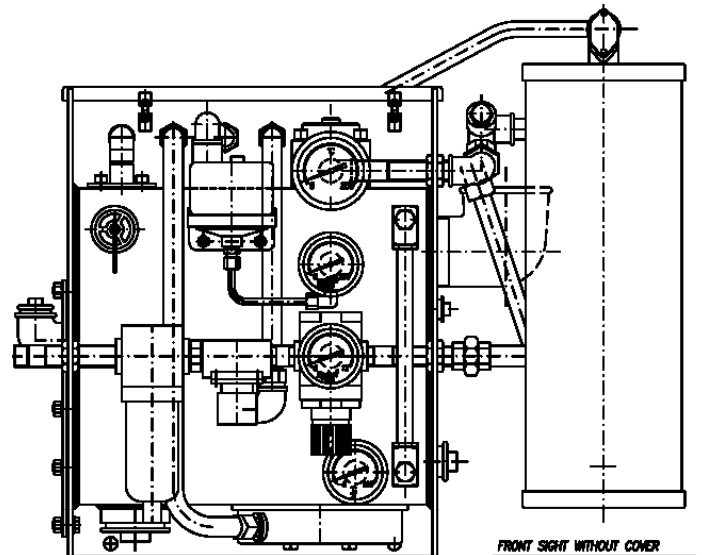
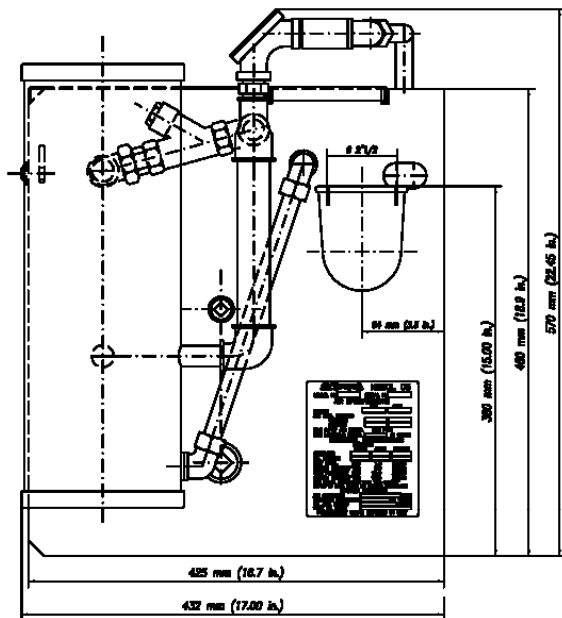
NOTES:

- 1- Generators without thermo-air contains the following electric parts, except air heaters AH, TS – 3, Ts – 1 and condensers.
- 2- All cables terminals are numbered but the exceptions.

AUTOMATIC MIST LUBRICATION

HIGH FLOWRATE GENERATOR 600 – 1200 CLM WITH THERMO-AIR

| Air-Heater Generator (Part. N° 45689) | Generator | Flowrate | Lubricator | Heater (50/60 Hz) | | Solenoid Valve (50/60 Hz) | | | CFM | THERMO-AIR Heater Voltage 220V 50/60Hz |
|--|-------------|----------|-------------|----------------------|---------|------------------------------|-------|-------|-----|---|
| | | | | Voltage | | Voltage | | | | |
| | | | | 115 V | 230 V | 24V DC | 115 V | 230 V | | |
| Part number | Part number | CLM | Part number | | | | | | | |
| 2032047 | 2032042 | 1200 | 45452 | / | 2032505 | / | / | 44420 | 41 | |
| 2032048 | 2032028 | 600 | 45451 | 2032504 | / | / | 44419 | / | 21 | 45689 |
| 2032051 | 2032041 | 1200 | 45452 | / | 2032505 | / | / | / | 41 | |
| 2032052 | 2032053 | 1200 | 45452 | / | 2032505 | 44418 | / | / | 41 | |



AUTOMATIC MIST LUBRICATION

INTERNAL ELECTRIC DIAGRAM FOR 2032047 AND 2032048

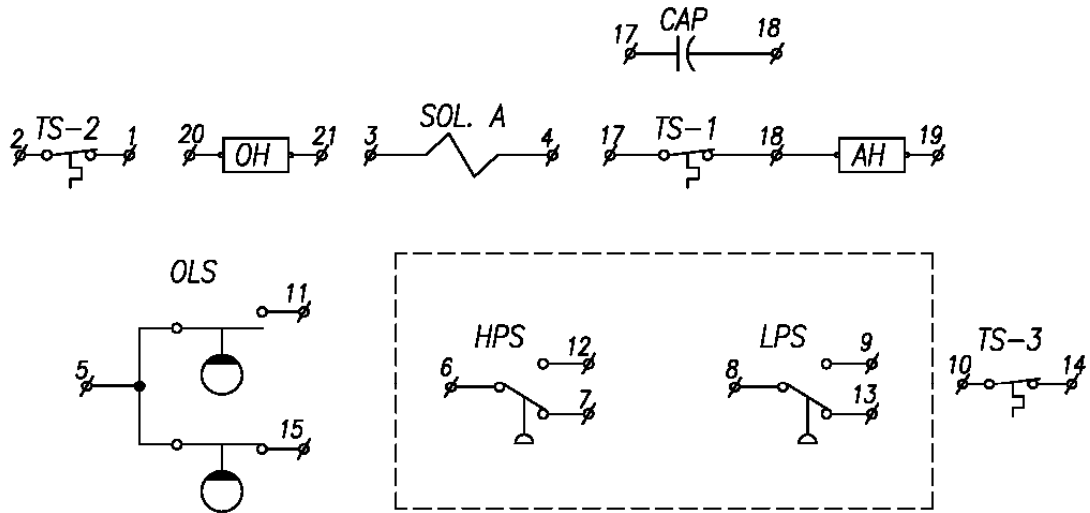
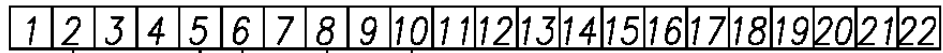


TABLE OF COMPONENTS

| | |
|--------|------------------------------------|
| SOL. A | Air valve solenoid |
| AH | Air heater element |
| OH | Oil heater element |
| HPS | Mist manifold high pressure switch |
| LPS | Mist manifold low pressure switch |
| TS-1 | Air heater thermostat |
| TS-2 | Oil heater thermostat |
| TS-3 | Low air temperature switch |
| CAP | Capacitor |
| OLS | Oil level switch |

ITALY
Dropsa SpA
t.(+39) 02-250791
f.(+39) 02-25079767

SPAIN
Polydrop, S.A.
t.(+34) 93-260-22-50
f.(+34) 93-260-22-51

U.S.A.
Dropsa Corporation
t.(+1) 586-566-1540
f.(+1) 586-566-1541

U.K.
Dropsa (UK) Ltd
t.(+44) 01784-431177
f.(+44) 01784-438598

BRAZIL
Dropsa
t.(+55) 011-563-10007
f.(+55) 011-563-19408

GERMANY
Dropsa Gmbh
t.(+49) 0211-394-011
f.(+49) 0211-394-013

AUSTRALIA
Dropsa Australia Ltd.
t.(+61) 02-9938-6644
f.(+61) 02-9938-6611

FRANCE
Dropsa Ame
t.(+33) 01-3993-0033
f.(+33) 01-3986-2636

